

Gila NF Precipitation as of 0600 September 4, 2025

33 (+5)

Slaughter Mesa

Jan-Aug – 5.25"

Sep – 0.39"

Gila NF Avg

36 (-1)

ERC (Past Week)

Gila NF 2000-2024
Historical Average
Precipitation

Jan-Aug = 11.96"

Sep = 1.92"

31 (+2) Luna

Jan-Aug – 4.80"

Sep – 0.04"

40 (NC) Reserve

Jan - Aug – 4.74"

Sep – 0.00"

Pelona **35 (+1)**

Jan-Aug – 5.75"

Sep – 0.31"

T-Bar

Apr-Aug – 4.11"

Sep – 0.03"

Beaverhead **27 (-7)**

Jan-Aug – 5.13"

Sep – 0.00"

42 (NC) Mogollon

Jan-Aug – 5.65"

Sep – 0.48"

Gila Center **34 (-6)**

Jan-Aug – 4.89"

Sep – 0.00"

46 (NC)

Burro Mt

Jan-Aug – 4.68"

Sep – 0.00"

Past 7 Days Actual

Slaughter Mesa – 0.53

Luna – 0.04

Reserve – 0.00

Mogollon – 0.59

Pelona – 0.47

T-Bar – 0.63

Beaverhead – 0.82

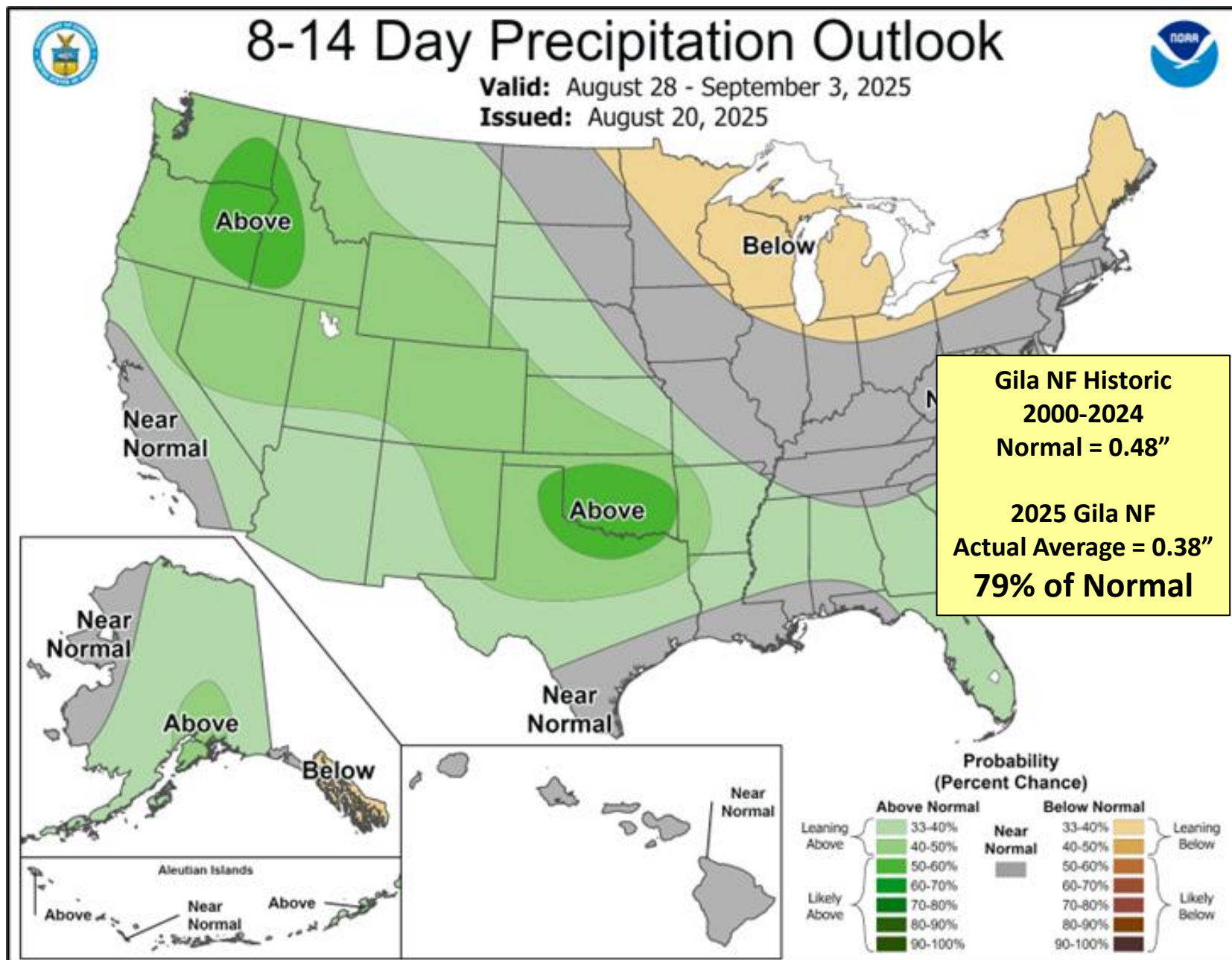
Gila Center – 0.14

Burro Mt – 0.57

Gila NF 7 Day Avg = 0.42

Gila NF Sep Average = 0.12

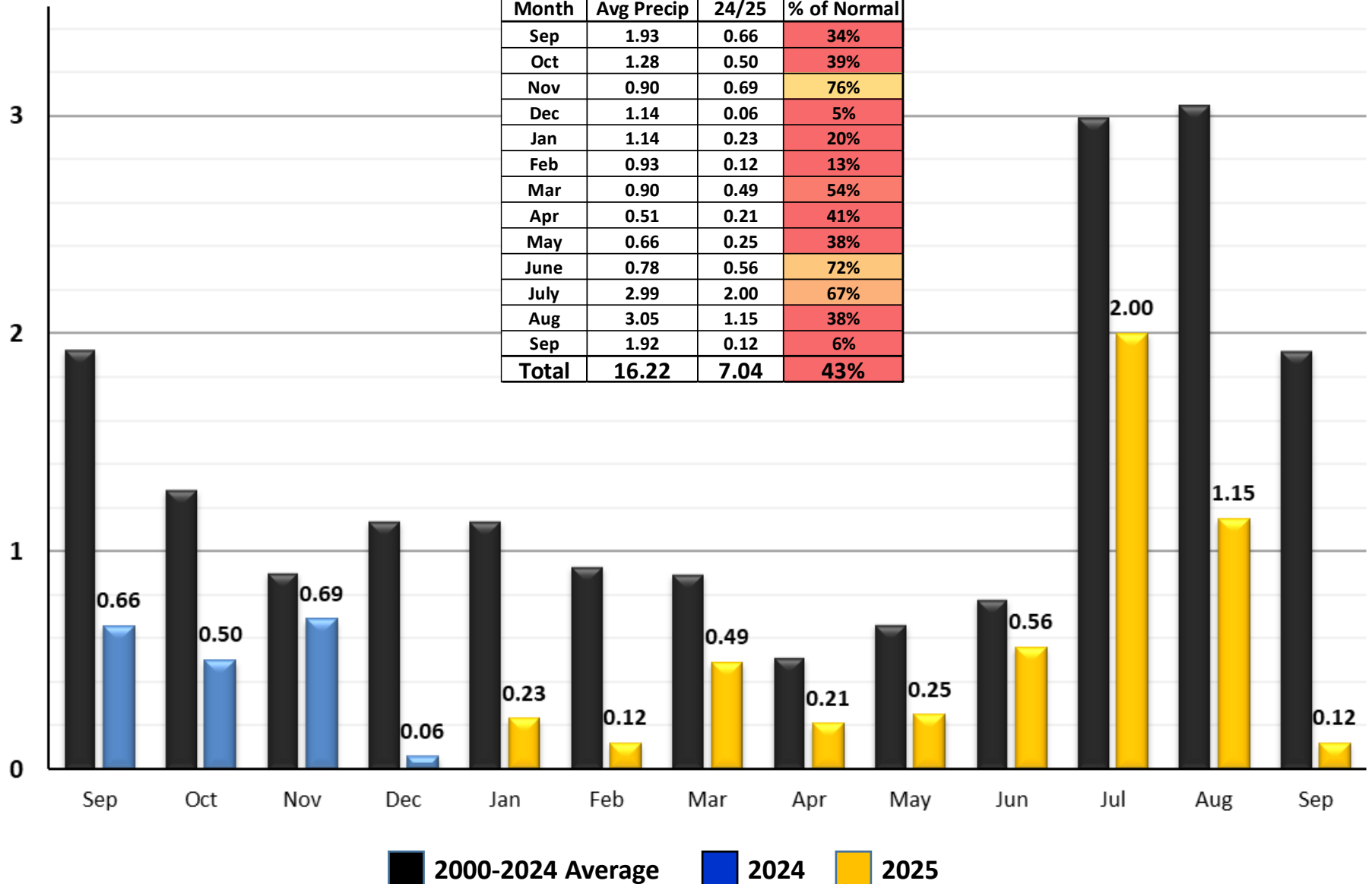
Forecasted Versus Actual Precipitation



Gila NF Precipitation - Historical Compared to 2024/2025

(All Gila NF RAWS Averaged as of 0600 September 4, 2025)

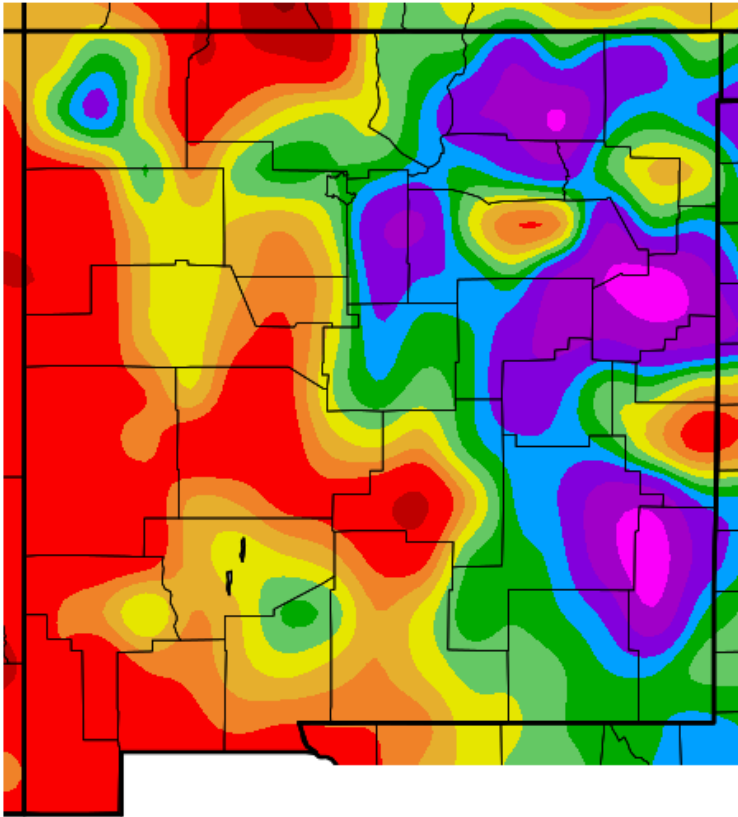
Month	Avg Precip	24/25	% of Normal
Sep	1.93	0.66	34%
Oct	1.28	0.50	39%
Nov	0.90	0.69	76%
Dec	1.14	0.06	5%
Jan	1.14	0.23	20%
Feb	0.93	0.12	13%
Mar	0.90	0.49	54%
Apr	0.51	0.21	41%
May	0.66	0.25	38%
June	0.78	0.56	72%
July	2.99	2.00	67%
Aug	3.05	1.15	38%
Sep	1.92	0.12	6%
Total	16.22	7.04	43%



Precipitation

Past 6 Months

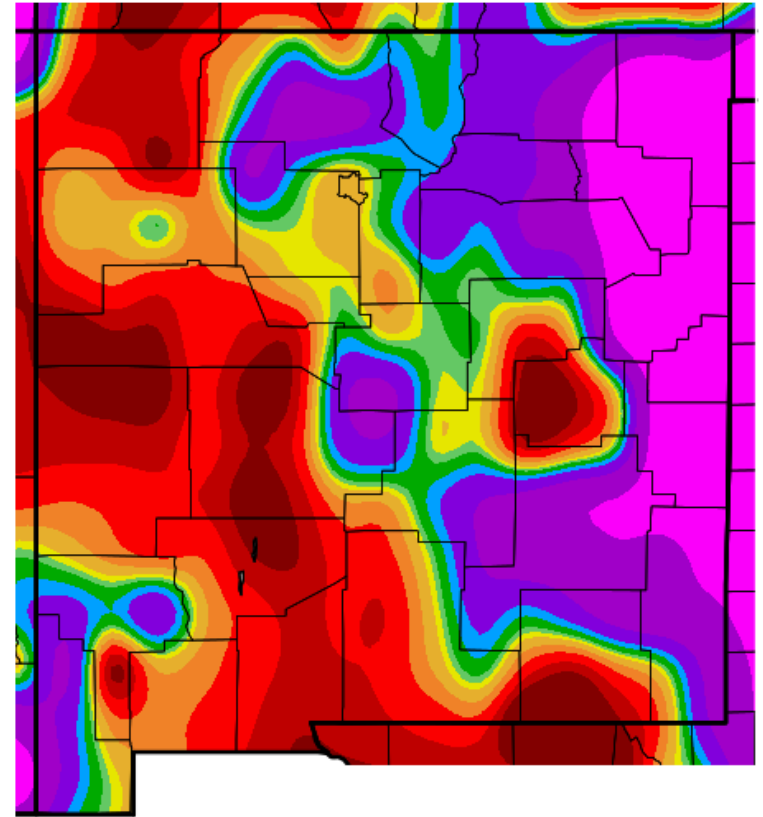
Percent of Average Precipitation (%)
3/3/2025 – 9/2/2025



Generated 9/ 3/2025 at WRCC using provisional data.
NOAA Regional Climate Centers

Past 7 Days

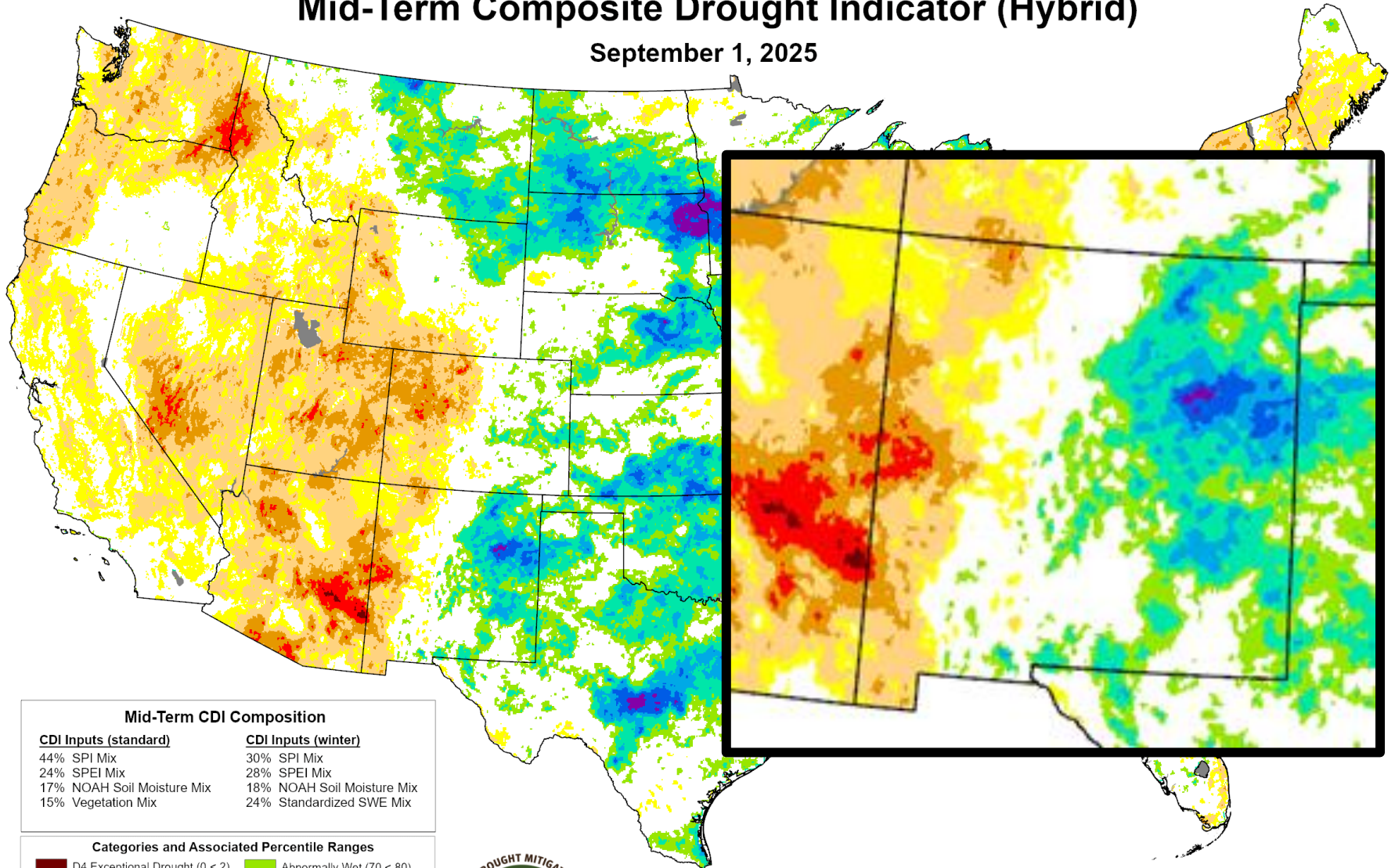
Percent of Average Precipitation (%)
8/27/2025 – 9/2/2025



Generated 9/ 3/2025 at WRCC using provisional data.
NOAA Regional Climate Centers

Mid-Term Composite Drought Indicator (Hybrid)

September 1, 2025



Mid-Term CDI Composition

CDI Inputs (standard)

44% SPI Mix
24% SPEI Mix
17% NOAA Soil Moisture Mix
15% Vegetation Mix

CDI Inputs (winter)

30% SPI Mix
28% SPEI Mix
18% NOAA Soil Moisture Mix
24% Standardized SWE Mix

Categories and Associated Percentile Ranges

D4 Exceptional Drought (0 < 2)	Abnormally Wet (70 < 80)
D3 Extreme Drought (2 < 5)	Moderately Wet (80 < 90)
D2 Severe Drought (5 < 10)	Severely Wet (90 < 95)
D1 Moderate Drought (10 < 20)	Extremely Wet (95 < 98)
D0 Abnormally Dry (20 < 30)	Exceptionally Wet (98 - 100)
Near Normal (30 < 70)	No Data

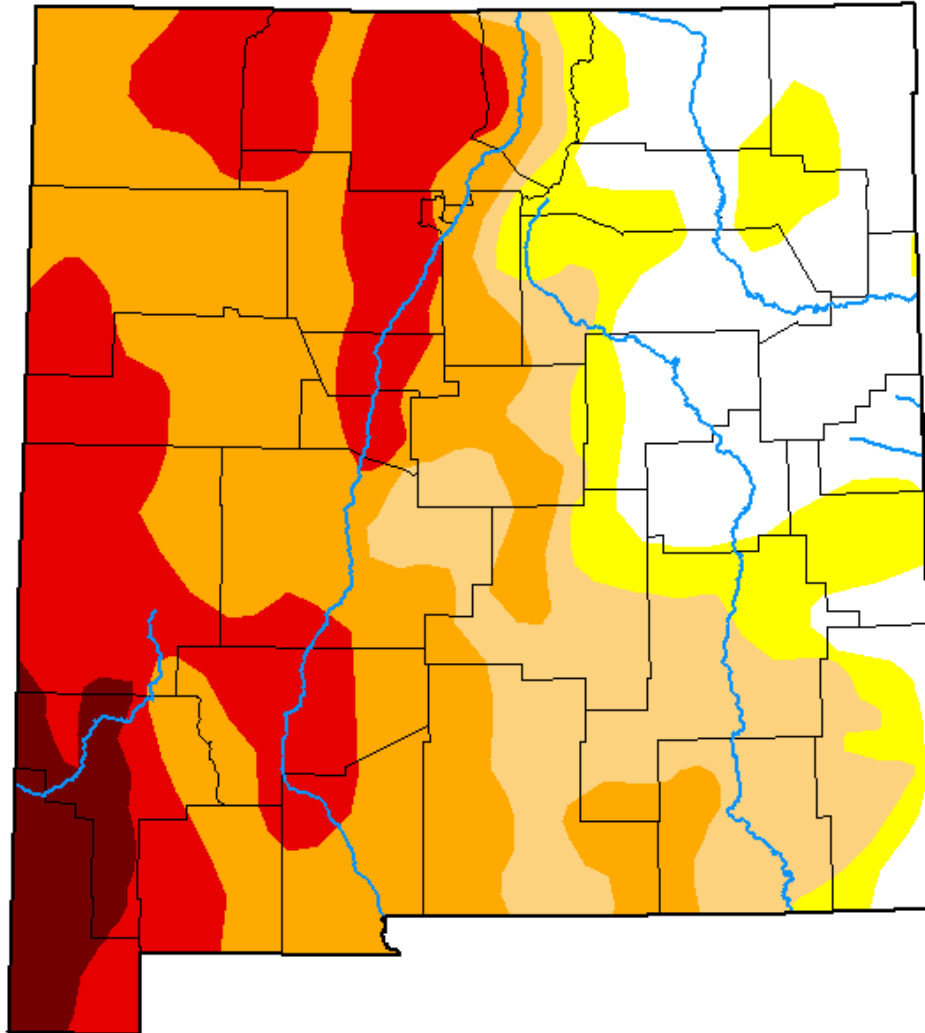


U.S. Drought Monitor

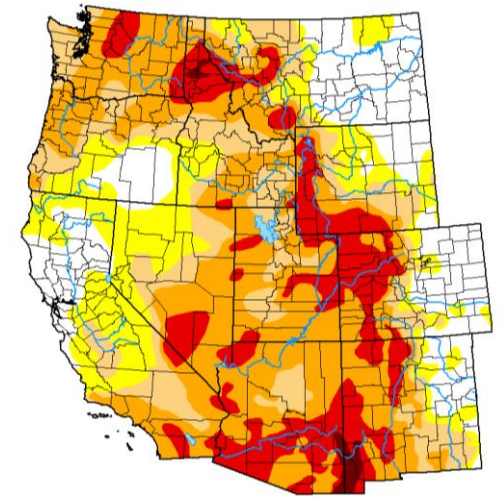
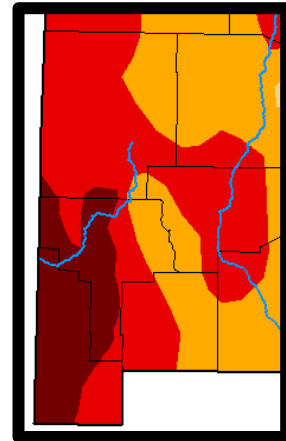
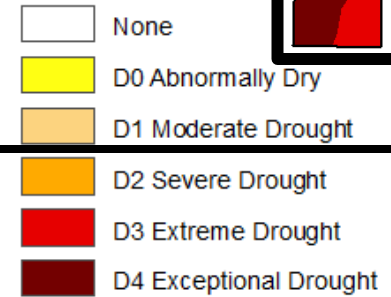
New Mexico

September 2, 2025
(Released Thursday, Sep. 4, 2025)
Valid 8 a.m. EDT

Last Week

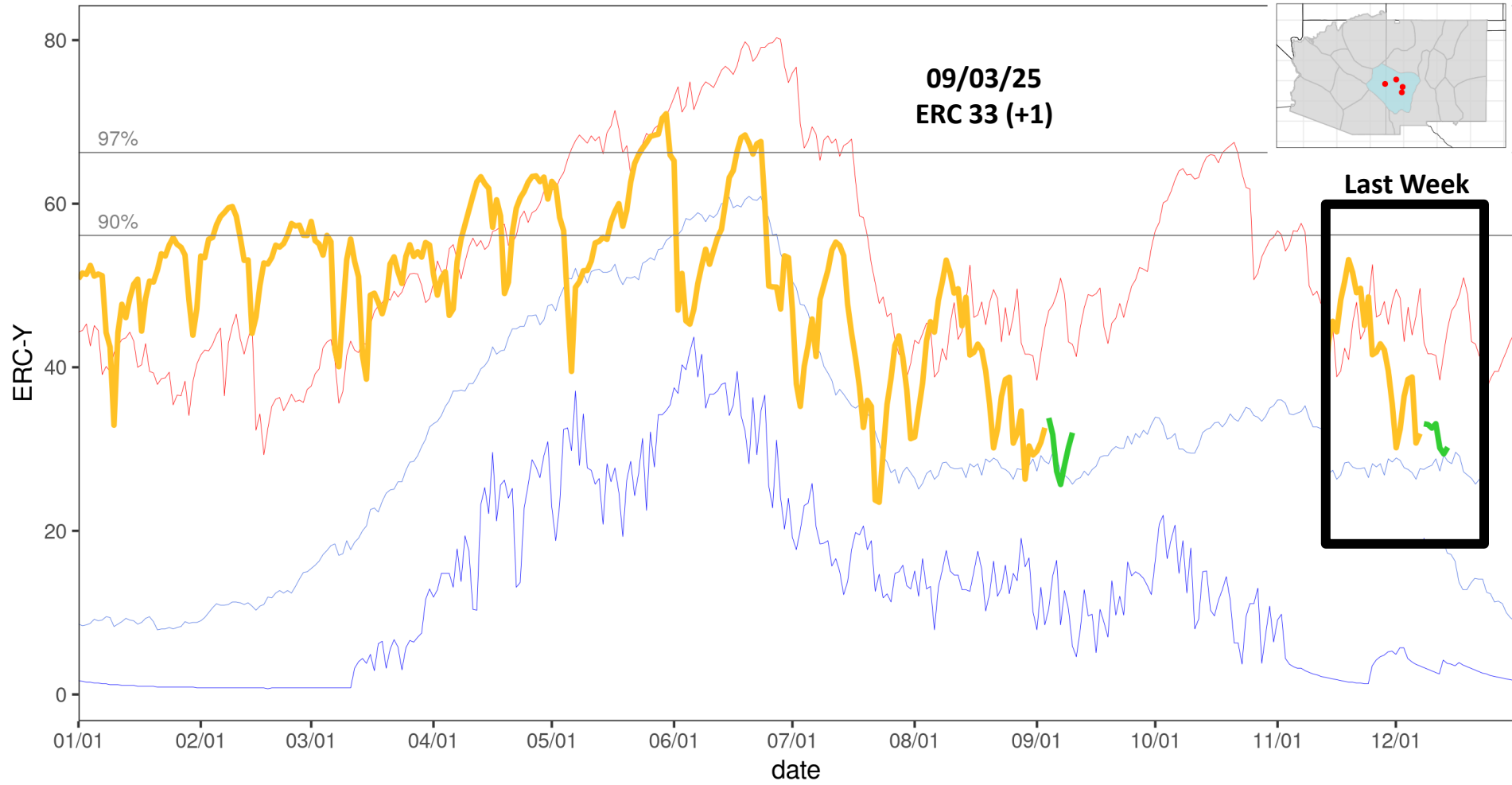


Intensity:



Energy Release Component (Fuel Model Y): PSA SW-08

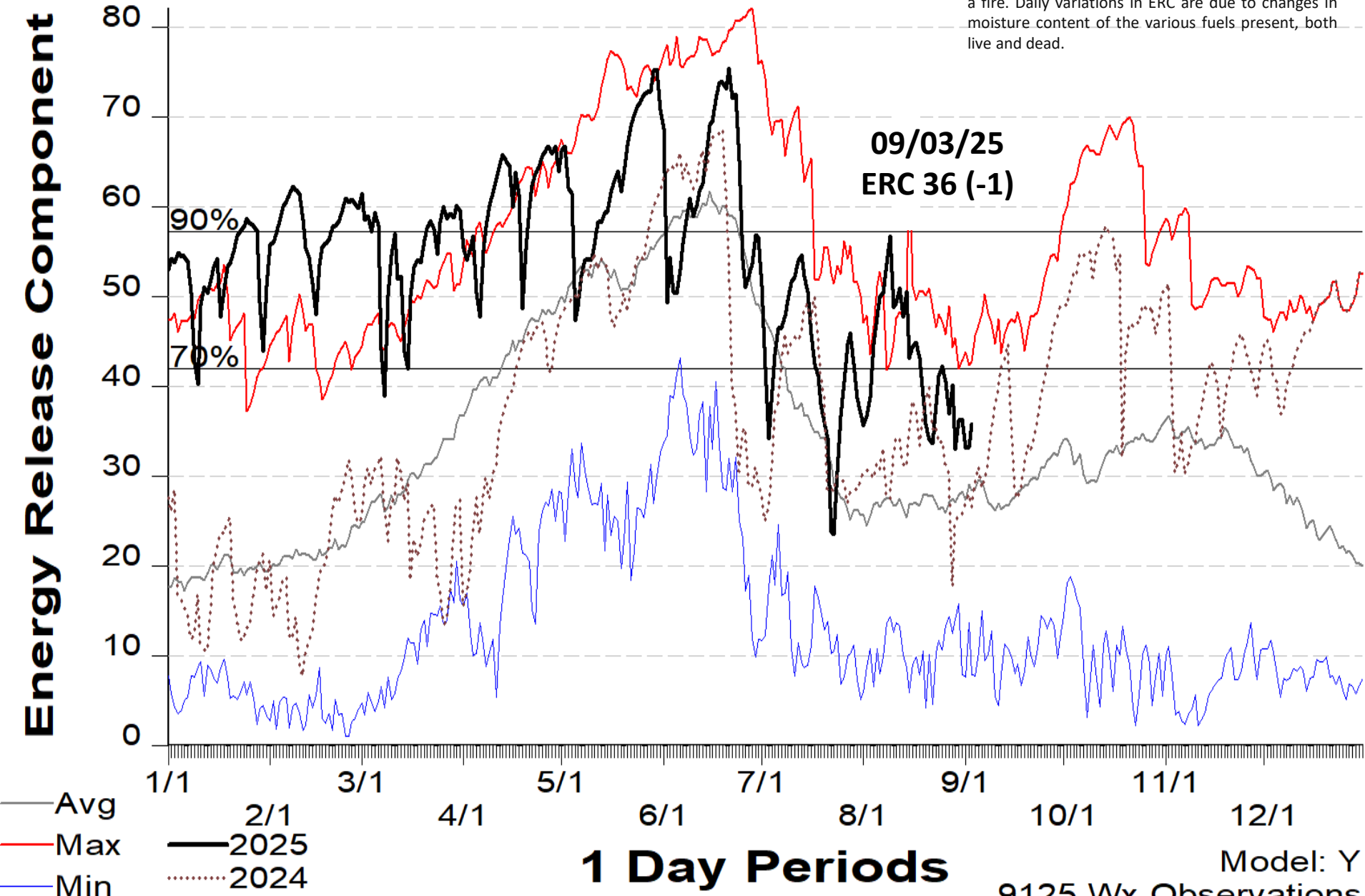
Alpine/ Slaughter/Pelona/Beaverhead



Avg Min Max 2025 Forecasted

The energy release component (ERC) is a number related to the available energy (BTU) per unit area (square foot) within the flaming front at the head of a fire. Daily variations in ERC are due to changes in moisture content of the various fuels present, both live and dead.

Energy Release Component



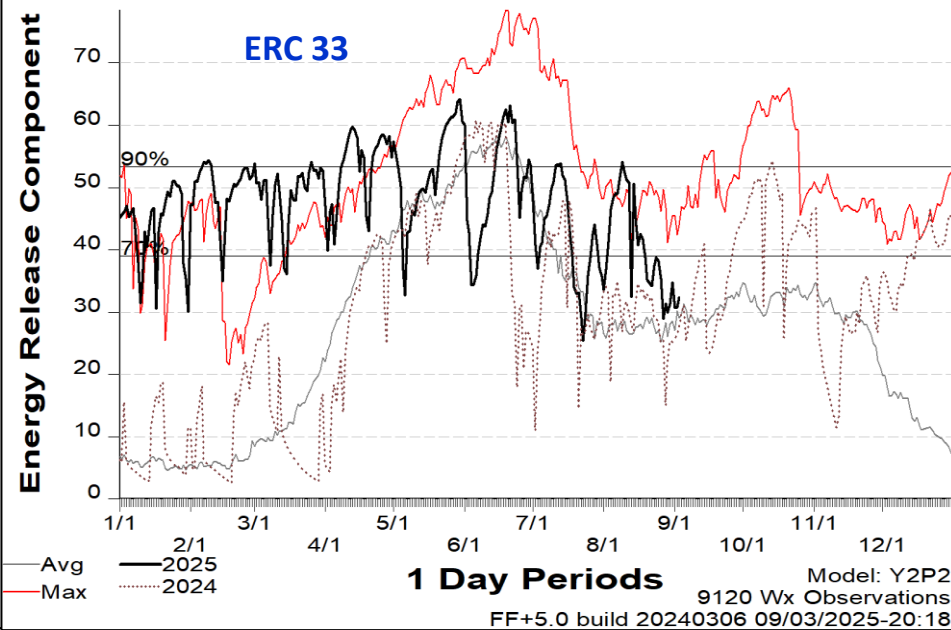
1 Day Periods

Model: Y

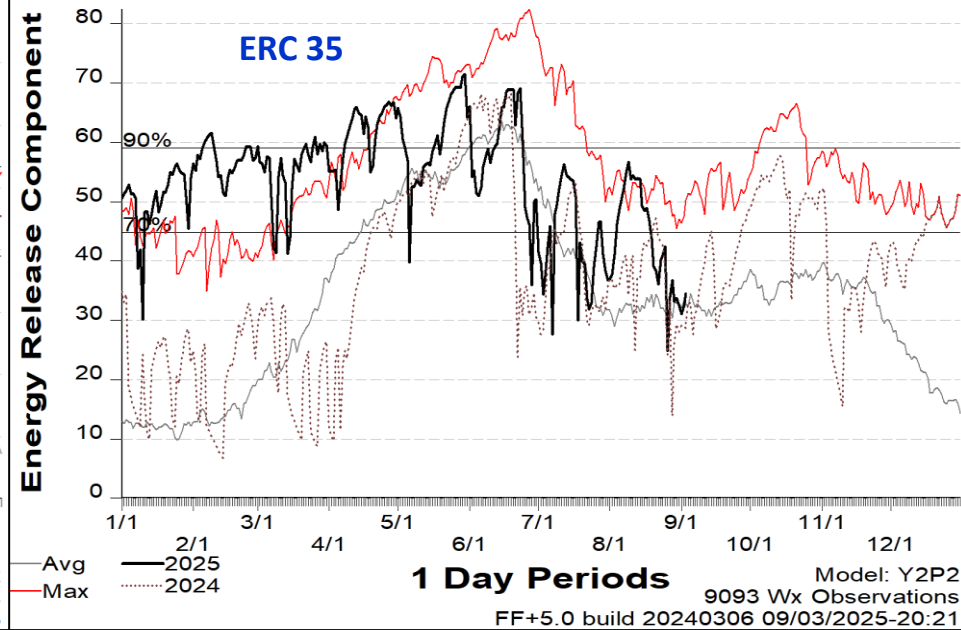
9125 Wx Observations

FF+5.0 build 20240306 09/03/2025-20:11

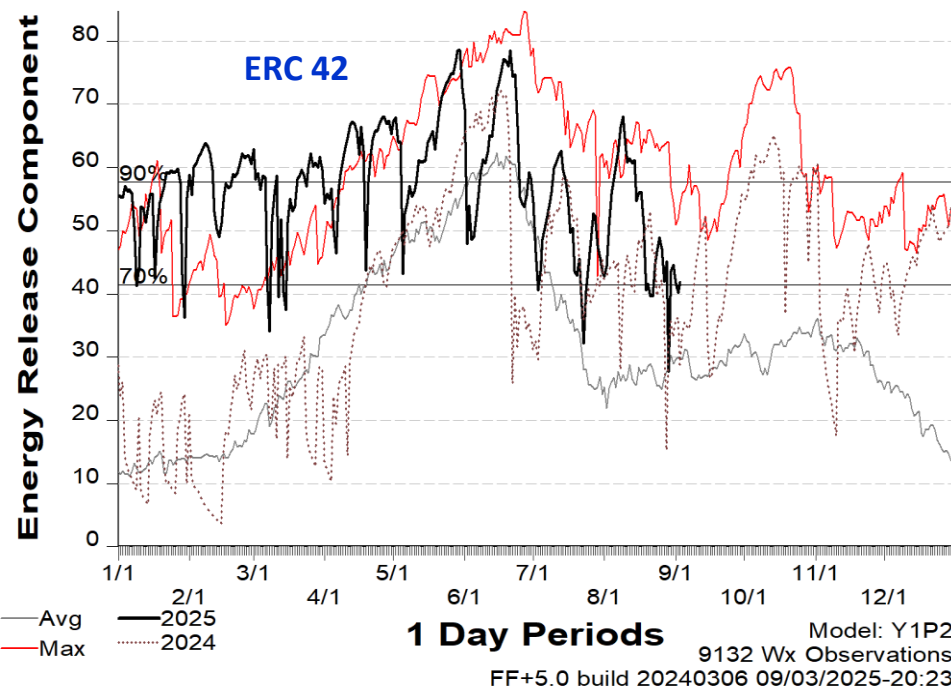
292008-SLAUGHTER MESA 2000 - 2024



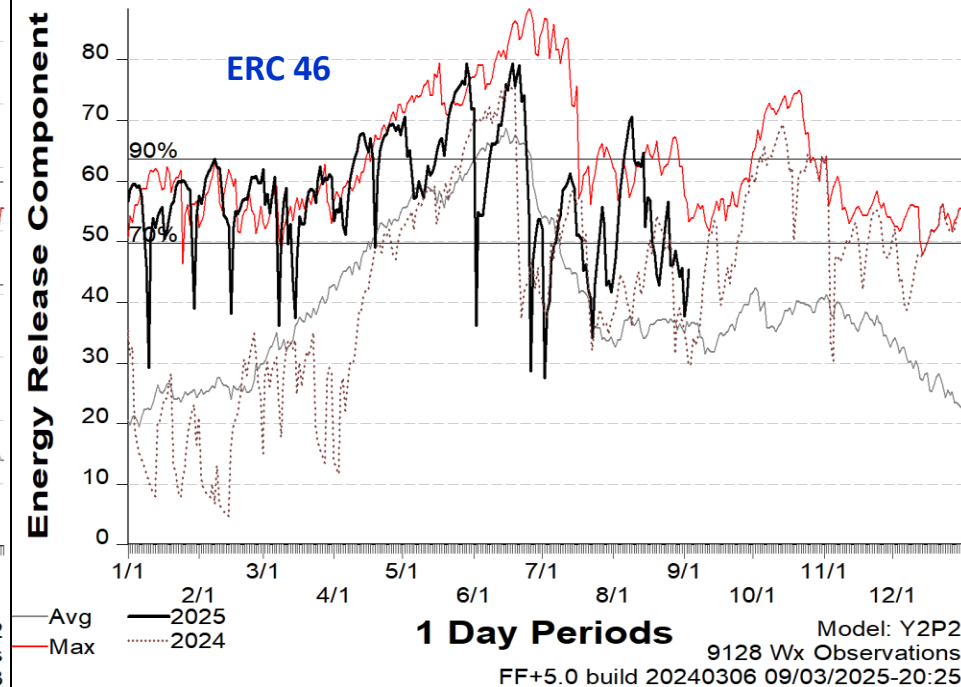
292009-PELONA 2000 - 2024



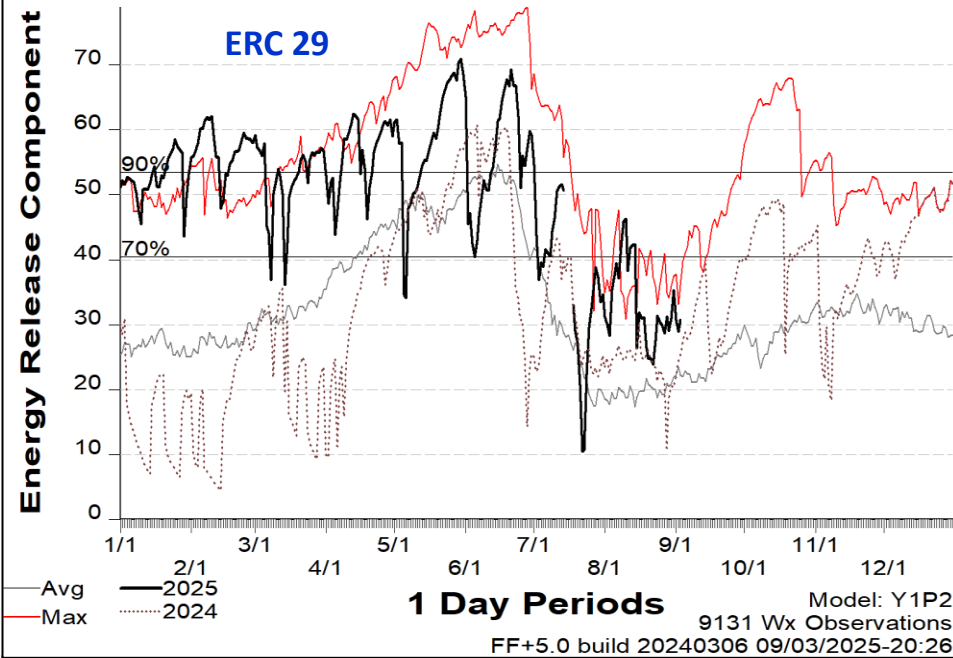
292013-MOGOLLON 2000 - 2024



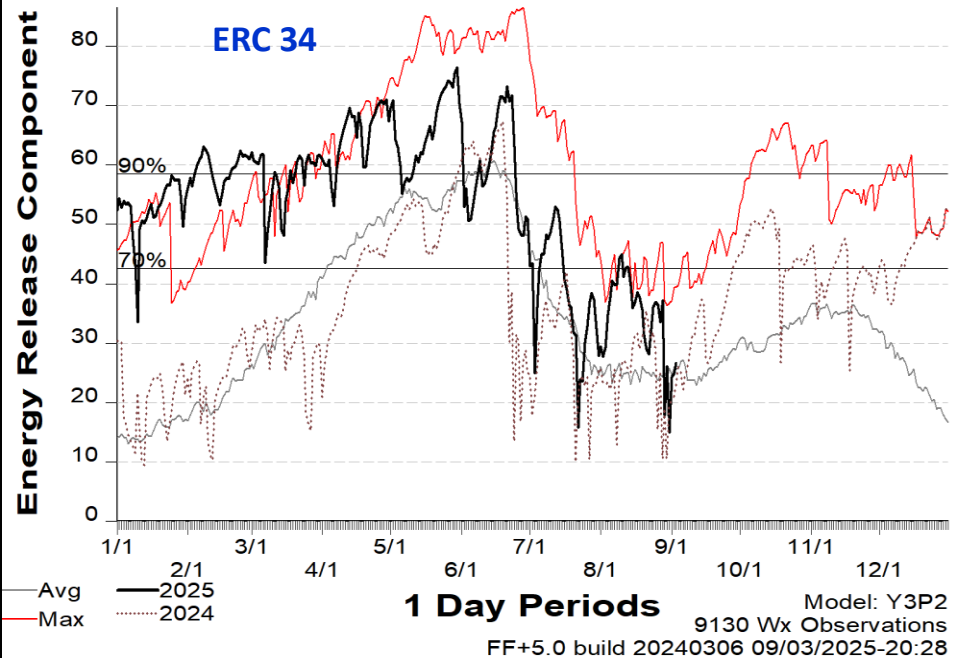
292504-BURRO MOUNTAIN 2000 - 2024



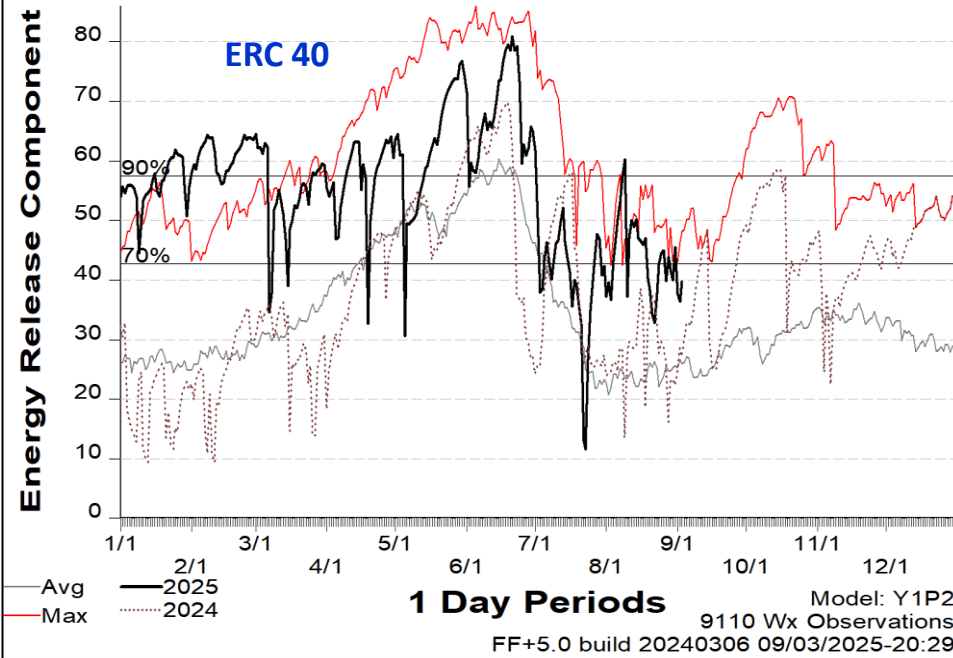
292004-LUNA
2000 - 2024



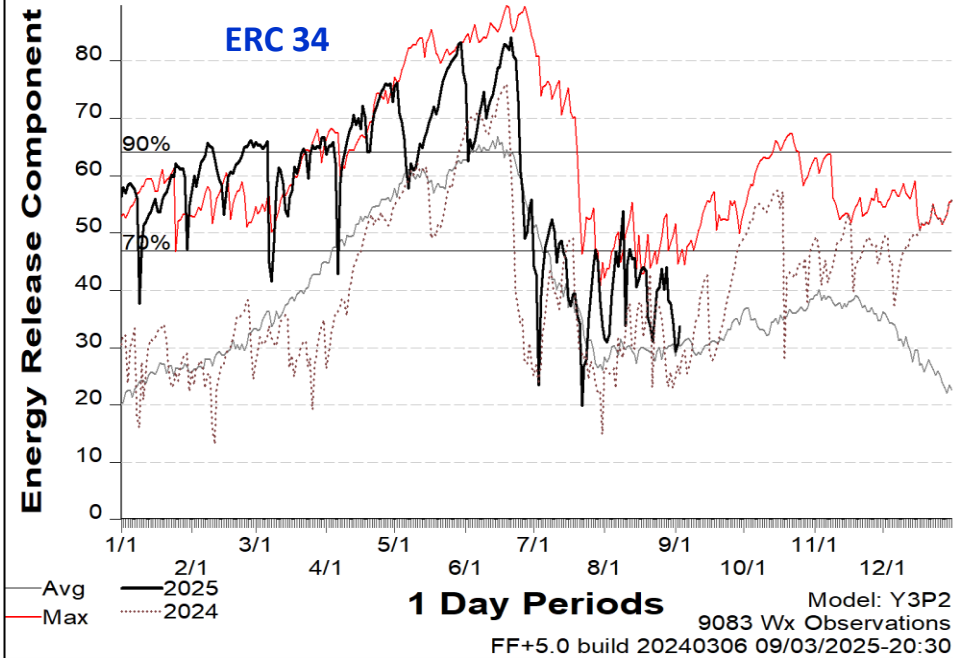
292001-BEAVERHEAD
2000 - 2024



292005-RESERVE
2000 - 2024

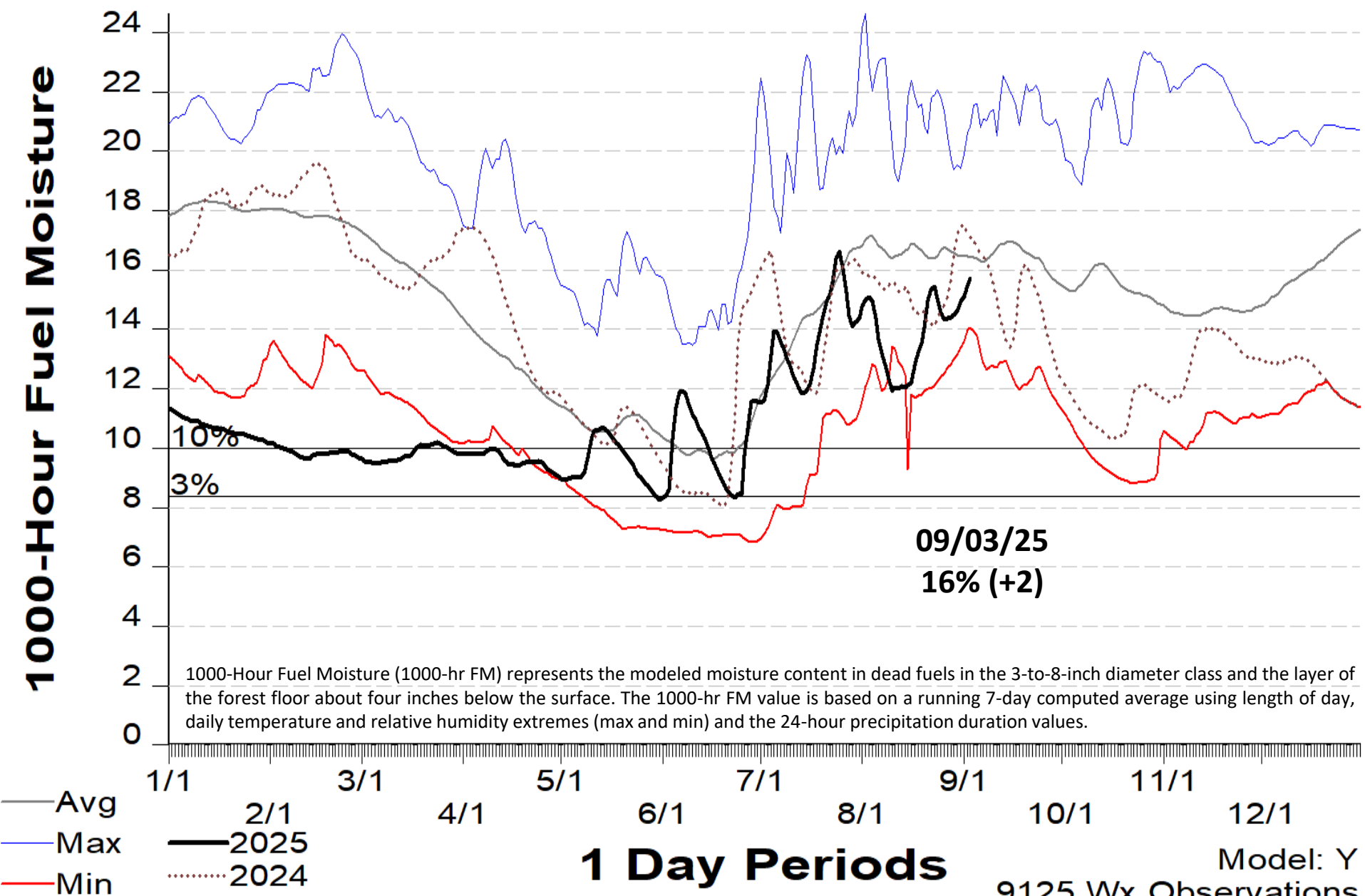


292011-GILA CENTER RAWS
2000 - 2024



SIG - Gila NF 2000 - 2024

1000-Hour Fuel Moisture



National Weather Service NEW MEXICO FIRE WEATHER ZONE 110 – 090420250553


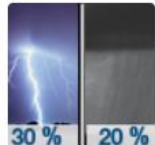


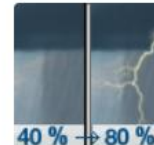




DISCUSSION...

- Moisture will increase through the remainder of the week thanks to an influx of tropical moisture.
- Showers and storms will favor western zones today before pushing eastward this evening and into Friday.
- Widespread wetting rainfall is likely.
- Localized heavy rainfall will enhance the risk of burn scar flash flooding.
- Drier conditions will return early next week but minimum humidity will stay well above critical thresholds.
- Winds are expected to remain light with typical afternoon gusts.



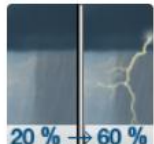


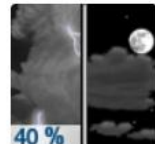



NM Weather Zone 110		Sky Weather	RH Recovery 0100-0800	Max Temp	Min RH	Wind Dir	Wind Speed	Prob of Precip
04-Sep	Thu	Partly to Mostly Cloudy w/ a Chance of PM T-Storms	50-60% Ridges 80-95% Valley	75-85°	18-30%	S	5-10	0-40%
05-Sep	Fri	Partly to Mostly Cloudy w/ a Chance of PM T-Storms	60-80% Ridges 80-100% Valley	65-75°	35-50%	S	5-10	0-60%
06-Sep	Sat	Partly to Mostly Cloudy w/ a Chance of PM T-Storms	60-90% Ridges 80-100% Valley	65-75°	35-55%	W	5-10	0-80%

13 Miles W Pie Town NM





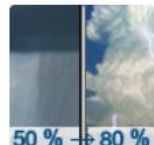




Quemado NM

Today	Tonight	Friday	Friday Night	Saturday	Saturday Night	Sunday	Sunday Night	Monday
								
High: 80 °F	Low: 53 °F	High: 73 °F	Low: 52 °F	High: 73 °F	Low: 51 °F	High: 78 °F	Low: 52 °F	High: 81 °F
Partly Sunny then Slight Chance T-storms	Chance T-storms then Slight Chance Showers	Slight Chance Showers then Chance T-storms	Chance T-storms then Chance Showers	Chance Showers then T-storms	Chance T-storms then Partly Cloudy	Sunny then Slight Chance T-storms	Partly Cloudy	Sunny

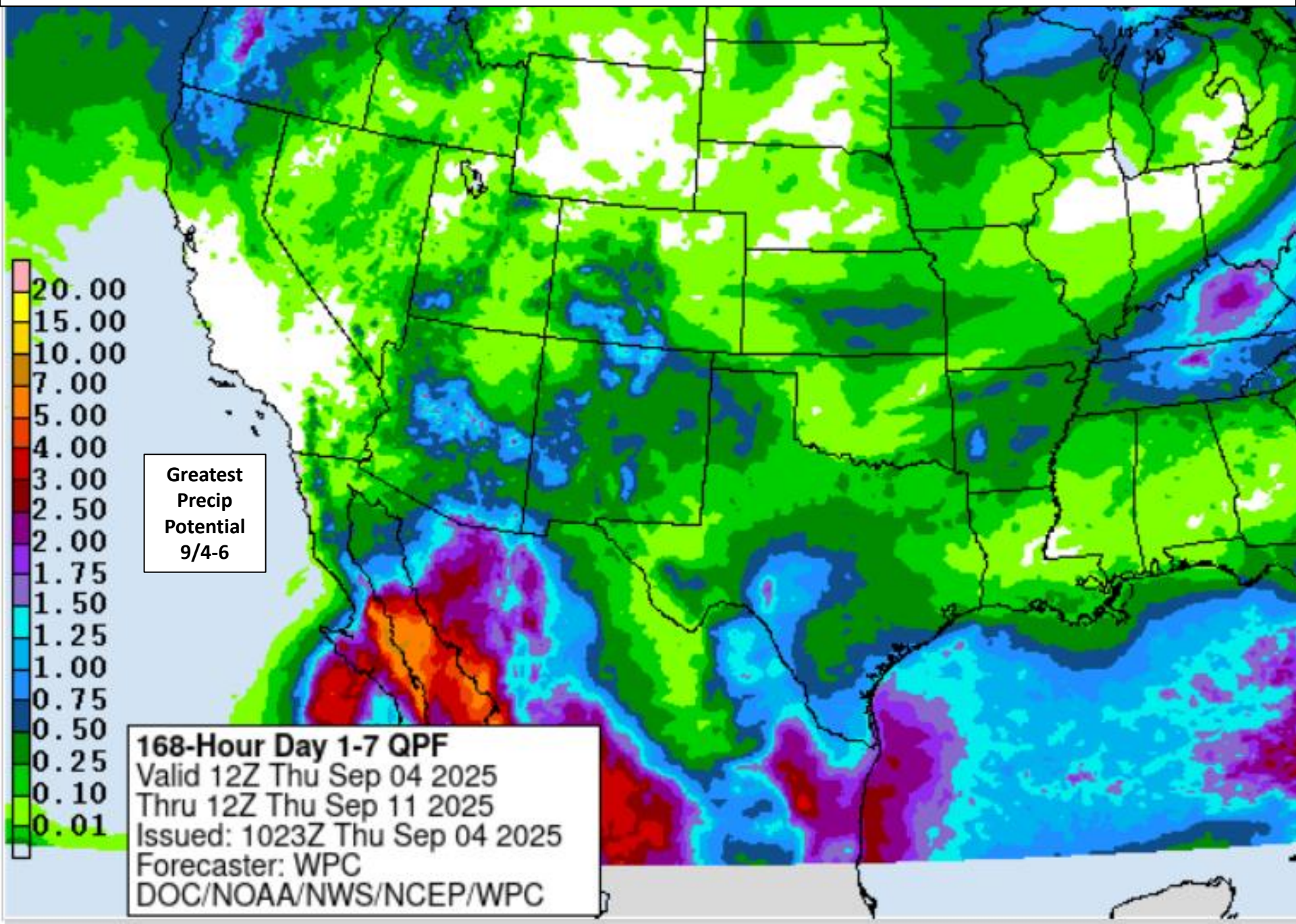
Reserve NM

Today	Tonight	Friday	Friday Night	Saturday	Saturday Night	Sunday	Sunday Night	Monday
								
High: 86 °F	Low: 52 °F	High: 76 °F	Low: 52 °F	High: 77 °F	Low: 51 °F	High: 86 °F	Low: 52 °F	High: 87 °F
Partly Sunny then Slight Chance T-storms	Chance T-storms then Slight Chance Showers	Slight Chance Showers then T-storms Likely	Chance T-storms then Chance Showers	Chance Showers then T-storms	Chance T-storms then Partly Cloudy	Sunny then Slight Chance T-storms	Partly Cloudy	Sunny

Silver City NM

Today	Tonight	Friday	Friday Night	Saturday	Saturday Night	Sunday	Sunday Night	Monday
								
High: 80 °F	Low: 57 °F	High: 73 °F	Low: 56 °F	High: 76 °F	Low: 56 °F	High: 81 °F	Low: 58 °F	High: 83 °F
Scattered T-storms	Chance Showers	Chance Showers then Showers Likely	Chance T-storms then Chance Showers	Chance Showers then T-storms	Chance T-storms then Partly Cloudy	Sunny then Slight Chance T-storms	Mostly Clear	Sunny

QUANTITATIVE PRECIPITATION FORECAST – 7-Day Total, September 4 - 11, 2025



Southwest Region – 7-Day Significant Wildland Fire Potential Outlook

ERC

Published: Sep 4, 2025 8:52:14 AM MT

Little or
NO Risk

LOW RISK

MOD Risk

Lightning

Windy

Predictive Service Area (PSA)	Wed 03 Sep	Thu 04 Sep	Fri 05 Sep	Sat 06 Sep	Sun 07 Sep	Mon 08 Sep	Tue 09 Sep	Wed 10 Sep
SW01 - Northwest AZ	30	32	29	26	26	28	31	33
SW02 - West-Central AZ	43	44	36	29	28	33	37	41
SW03 - Southwest AZ	61	56	48	43	41	44	52	57
SW04 - Four Corners Area	38	39	36	32	33	35	37	38
SW05 - Western Mogollon Rim	34	31	26	23	24	25	28	31
SW06N - Central AZ/Phoenix Metro	70	67	57	50	47	49	53	56
SW06S - Southeast AZ	46	43	35	29	29	31	35	39
SW07 - Northwest NM Mtns.	33	34	31	24	22	24	27	28
SW08 - White Mtns. & Gila Region	32	34	31	27	25	28	30	32
SW09 - South/Central NM Lowlands	45	47	42	36	35	35	37	40
SW10 - Sangre De Cristo Mountains	25	28	27	22	22	22	24	24
SW11 - Central NM Mtns. & Plains	38	40	39	32	30	30	31	33
SW12 - South-Central Nm Mtns.	27	30	30	23	22	22	24	26
SW13 - Northeast NM/NW TX	30	34	36	32	28	26	26	26
SW14N - Southeast NM/West TX	38	43	46	37	34	31	31	32

Northern Gila NF

Quemado Lake Weekly Summary

	Thu Sep 4	Fri Sep 5	Sat Sep 6	Sun Sep 7	Mon Sep 8	Tue Sep 9	Wed Sep 10
Max Temp, °F	78	68	69	75	78	79	78
Min Temp, °F	52	50	51	50	52	52	52
Max RH, %	63	80	86	82	71	69	66
Min RH, %	23	45	48	31	26	24	24
Max Dewpoint, °F	44	48	48	48	45	43	42
Min Dewpoint, °F	36	45	47	42	40	38	38
Max Wind, mph	8	6	6	6	7	8	10
Min Wind, mph	0	1	1	1	1	1	2
Max Wind Gust, time/dir.	6 PM ↗	5 PM ↗	5 PM →	4 PM ↘	1 PM ↗	4 PM ↗	2 PM ↗
Max Wind Gust, mph	12	8	8	8	9	12	15
Min Wind Gust, mph	0	1	1	1	1	1	3
Max Cloud Cover, %	95	88	86	50	35	28	35
Min Cloud Cover, %	54	56	59	15	11	11	10
Max Prob. of Precip., %	24	59	78	18	13	13	19
Max Mixing Height, ft	11500	7000	7500	7500	8000	10500	8000
Min Mixing Height, ft	0	0	0	0	0	0	0
Max Ventilation Rate, kt-ft	81	28	56	28	98	189	184
Min Ventilation Rate, kt-ft	0	0	0	0	0	0	0

Southern Gila NF

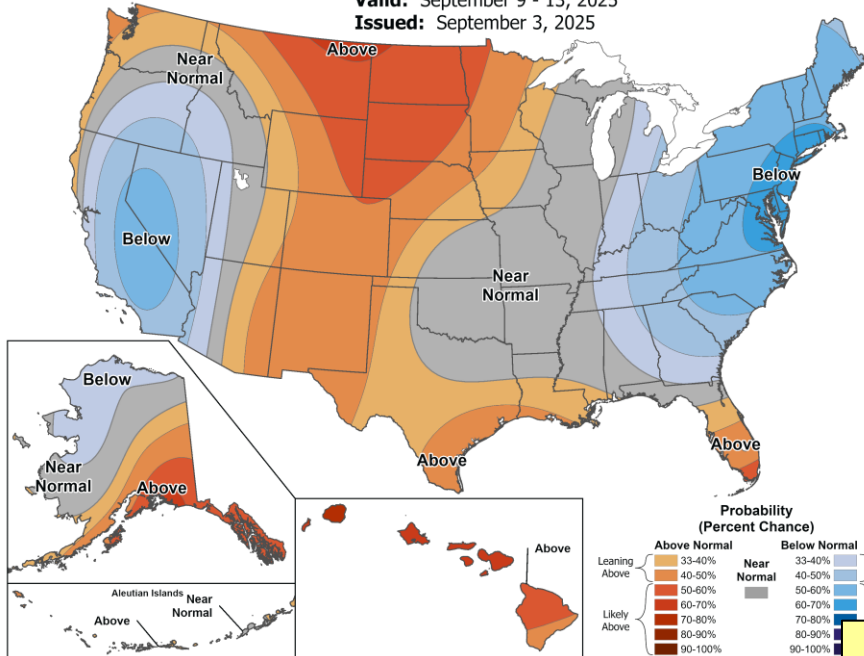
White Signal, NM
Weekly Summary

	Thu Sep 4	Fri Sep 5	Sat Sep 6	Sun Sep 7	Mon Sep 8	Tue Sep 9	Wed Sep 10
Max Temp, °F	80	72	75	80	82	84	84
Min Temp, °F	63	58	57	58	61	61	61
Max RH, %	62	80	90	86	70	62	62
Min RH, %	31	49	48	35	28	25	26
Max Dewpoint, °F	50	54	56	54	53	50	49
Min Dewpoint, °F	44	51	52	48	45	43	45
Max Wind, mph	13	10	9	9	10	10	12
Min Wind, mph	5	6	5	6	6	6	8
Max Wind Gust, time/dir.	4 PM ↗	3 PM ↗	4 PM ↗	3 PM ↗	4 PM ↗	3 PM ↗	2 PM ↗
Max Wind Gust, mph	22	18	18	16	20	20	21
Min Wind Gust, mph	7	9	7	9	10	10	13
Max Cloud Cover, %	99	97	66	22	23	25	24
Min Cloud Cover, %	72	68	29	10	6	3	5
Max Prob. of Precip., %	44	57	68	15	9	8	14
Max Mixing Height, ft	6641	4828	5302	6510	8319	7039	7153
Min Mixing Height, ft	445	445	160	0	81	59	22
Max Ventilation Rate, kt-ft	66	41	39	52	67	81	78
Min Ventilation Rate, kt-ft	3	2	2	0	1	1	0



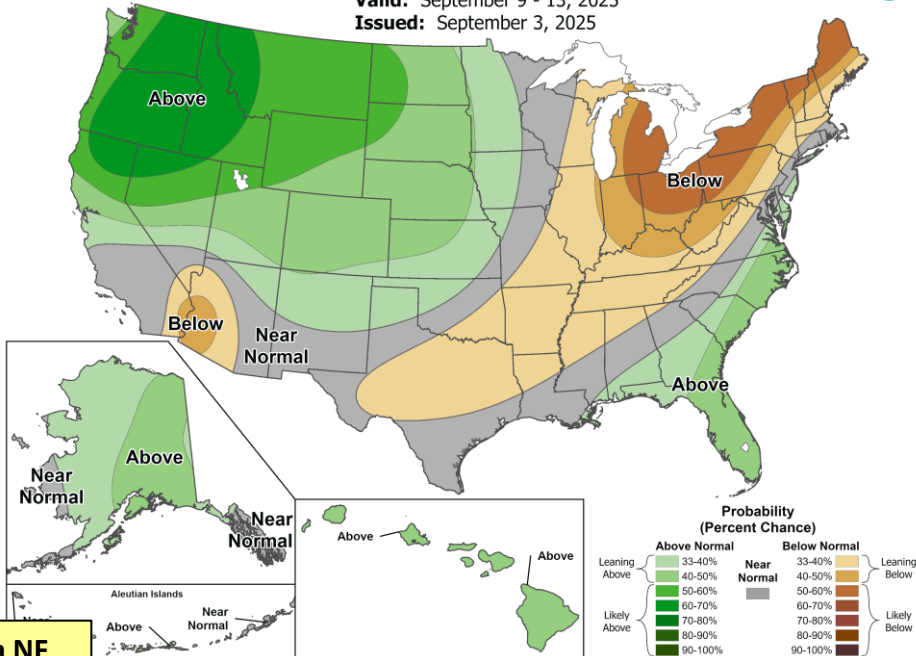
6-10 Day Temperature Outlook

Valid: September 9 - 13, 2025
Issued: September 3, 2025



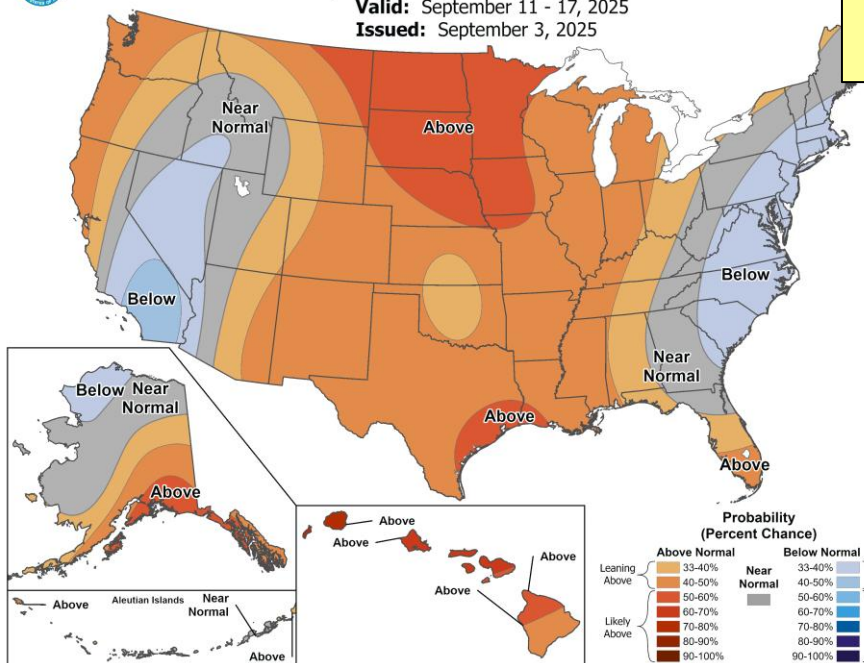
6-10 Day Precipitation Outlook

Valid: September 9 - 13, 2025
Issued: September 3, 2025



8-14 Day Temperature Outlook

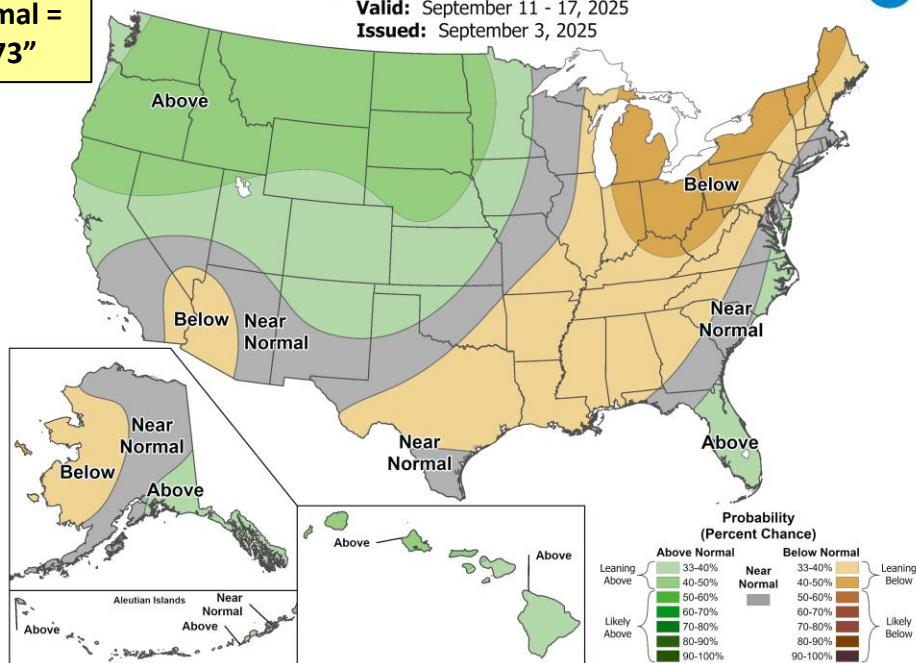
Valid: September 11 - 17, 2025
Issued: September 3, 2025



Gila NF
2000-2024
Normal =
0.73"

8-14 Day Precipitation Outlook

Valid: September 11 - 17, 2025
Issued: September 3, 2025

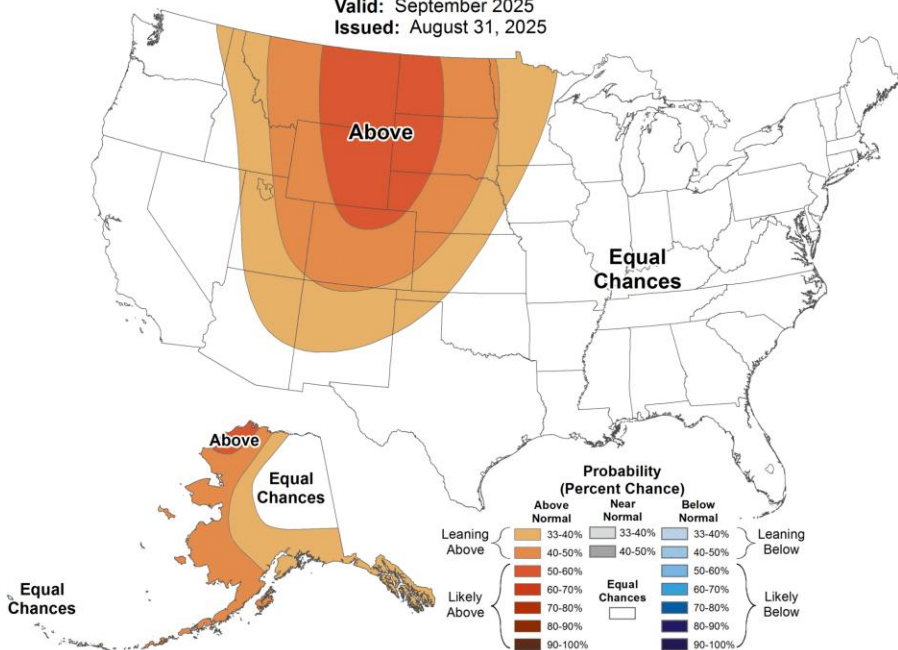




Monthly Temperature Outlook



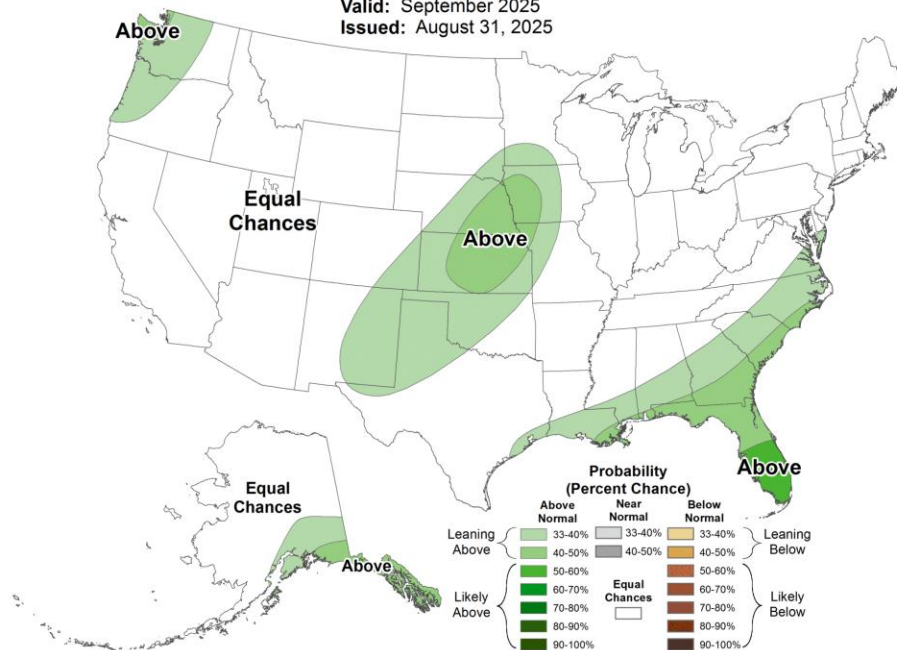
Valid: September 2025
Issued: August 31, 2025



Monthly Precipitation Outlook



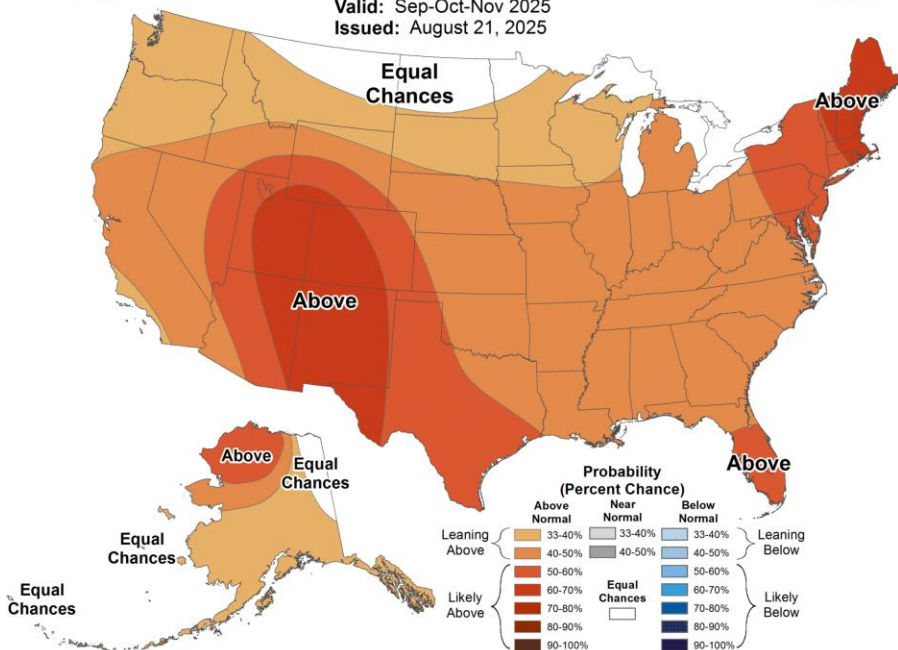
Valid: September 2025
Issued: August 31, 2025



Seasonal Temperature Outlook



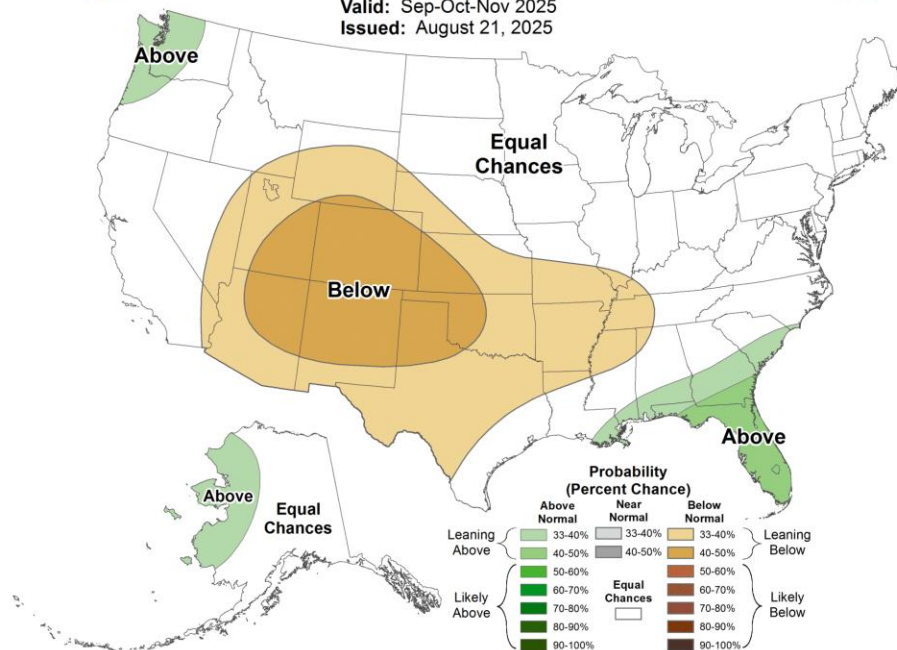
Valid: Sep-Oct-Nov 2025
Issued: August 21, 2025



Seasonal Precipitation Outlook



Valid: Sep-Oct-Nov 2025
Issued: August 21, 2025



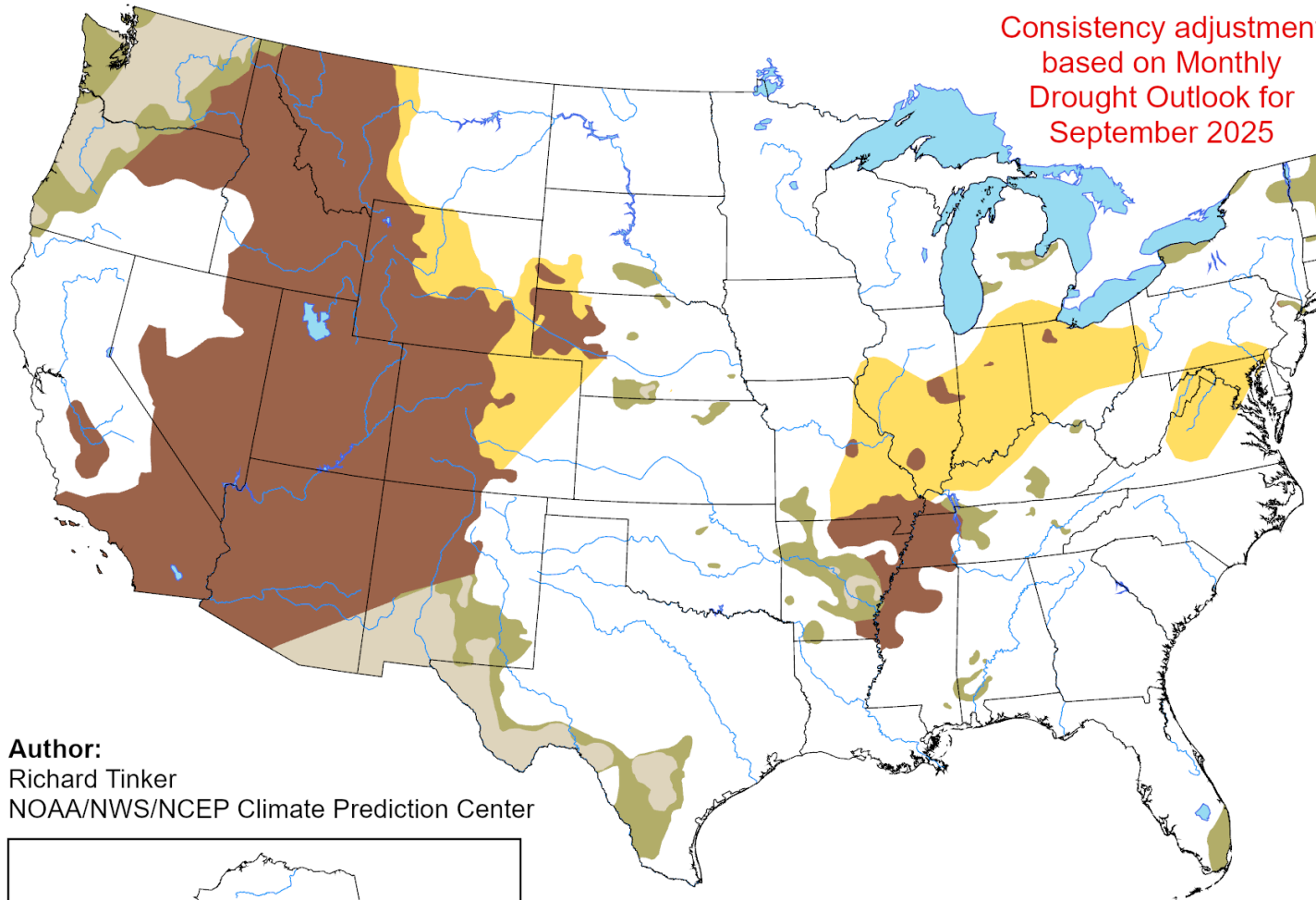
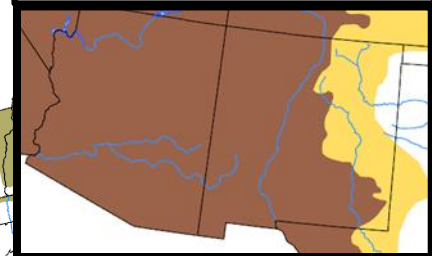
U.S. Seasonal Drought Outlook

Drought Tendency During the Valid Period

Valid for September 1 - November 30, 2025
Released August 31, 2025

Consistency adjustment
based on Monthly
Drought Outlook for
September 2025

Valid for August 21 - November 30, 2025
Released August 21, 2025

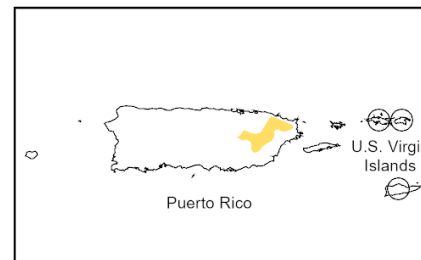
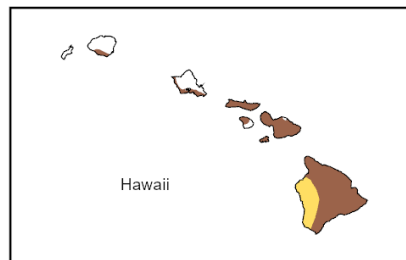


Depicts large-scale trends based on subjectively derived probabilities guided by short- and long-range statistical and dynamical forecasts. Use caution for applications that can be affected by short lived events. "Ongoing" drought areas are based on the U.S. Drought Monitor areas (intensities of D1 to D4).

NOTE: The tan areas imply at least a 1-category improvement in the Drought Monitor intensity levels by the end of the period, although drought will remain. The green areas imply drought removal by the end of the period (D0 or none).

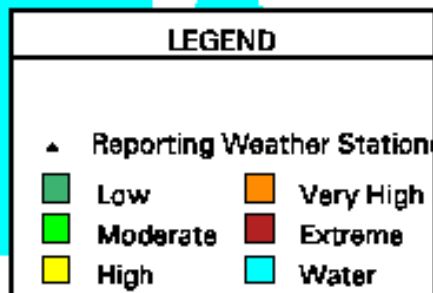
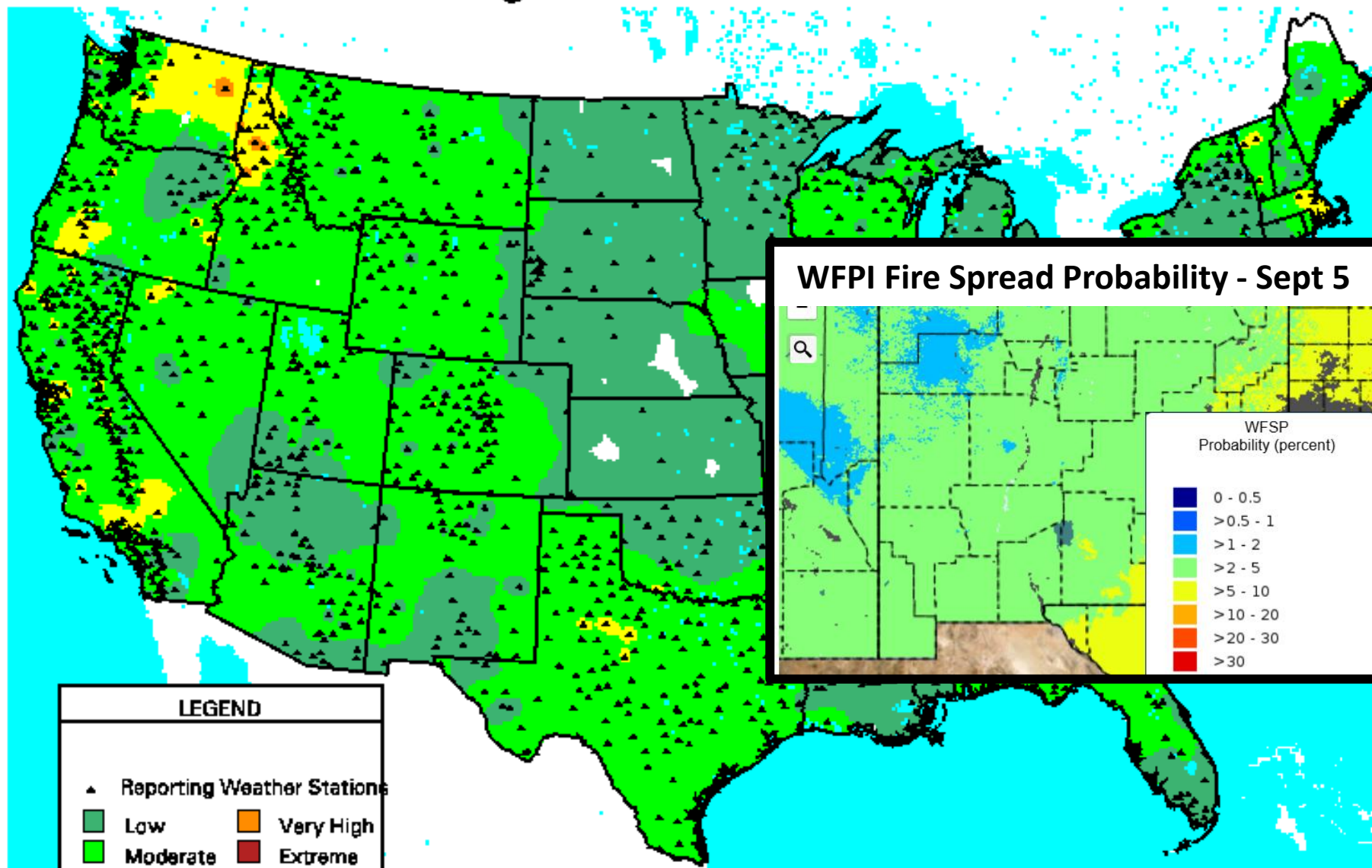
- Drought persists**
- Drought remains, but improves**
- Drought removal likely**
- Drought development likely**
- No drought**

Author:
Richard Tinker
NOAA/NWS/NCEP Climate Prediction Center



<https://go.usa.gov/3eZ73>

Forecast Fire Danger Class: 05-SEP-25



(Inv. Dist.² Interp.)

WFAS-MAPS Graphics FIRE BEHAVIOR RESEARCH MISSOULA, MT

